

## YOUR APPOINTMENT AT THE CHU SAINTE-JUSTINE : MAKING CHANGES TO PROTECT THE COMMUNITY

The Marie-Enfant rehabilitation Center CHU Sainte-Justine is implementing precautions to reduce the risks related to infection transmission and insure the safety of our patients and employees. Here is what you'll need to know before your visit at our healthcare facility.

### APPOINTMENT AND ARRIVAL



To ensure social distancing measures can be respected in our waiting rooms, **please arrive 15 minutes prior to your scheduled appointment.**

### PARENT AND CAREGIVER



For appointments in the ambulatory care clinic, please note that only one parent or caregiver will be authorized per child. Siblings will not be permitted.

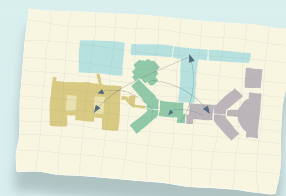
### MASKS

Wearing a mask is now mandatory for all patients and visitors of the Marie-Enfant rehabilitation Center.



### ACCESSIBILITY

When confirming your appointment, we will specify which entry point to use.



### MAKE SURE TO BRING



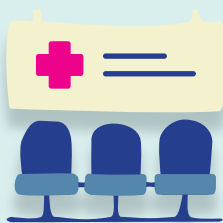
The healthcare provider's name and the time of the appointment



The **hospital card** as well as the patient's RAMQ Health Insurance card

Please **only bring essential personal belongings** to limit the spread of infections

### UPON ARRIVAL



At each entry point an agent will provide you with the necessary guidance and directions for your visit.

If your healthcare provider is not ready to welcome you, you will be redirected to a waiting room and, in time, guided by an employee to the location of your appointment